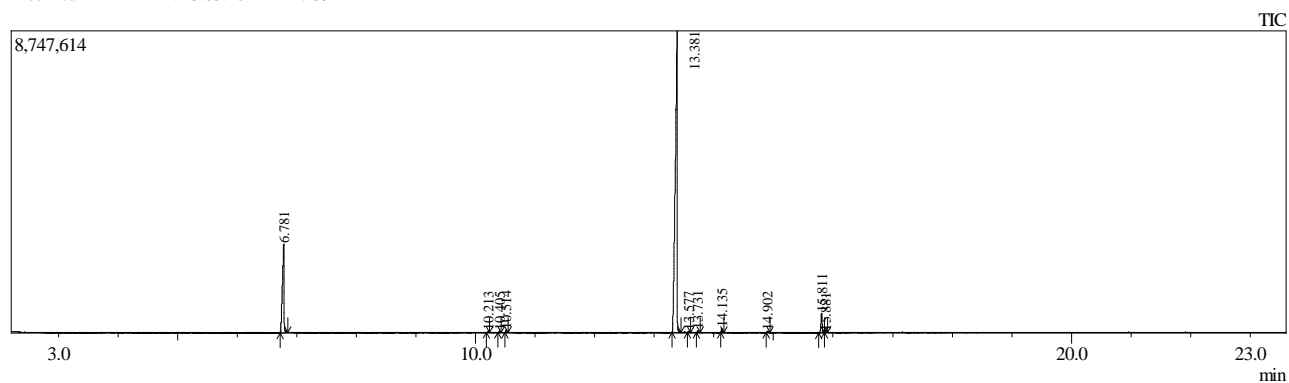


Sample Information

Analyzed by : Admin
 Analyzed : 15.05.2024 22:04:19
 Sample Type : Unknown
 Level # : 1
 Sample Name : 1865-3 Blind estradiol screening
 Sample ID :
 IS Amount : [1]=1
 Sample Amount : 1
 Dilution Factor : 1
 Vial # : 125
 Injection Volume : 0.50
 Data File : C:\GCMSsolution\Data\Project1\1865-3 Blind estradiol screening _125.qgd
 Org Data File : C:\GCMSsolution\Data\Project1\1865-3 Blind estradiol screening _125.qgd
 Method File : C:\GCMSsolution\Data\Project1\the real screening gradient.qgm
 Org Method File : C:\GCMSsolution\Data\Project1\the real screening gradient.qgm
 Report File : C:\GCMSsolution\Data\Project1\Simple Qualitative.qgr
 Tuning File : C:\GCMSsolution\System\Tune1\HIGH CONCENTRATION TUNE.qgt
 Modified by : Admin
 Modified : 15.05.2024 22:27:59



Peak Report TIC

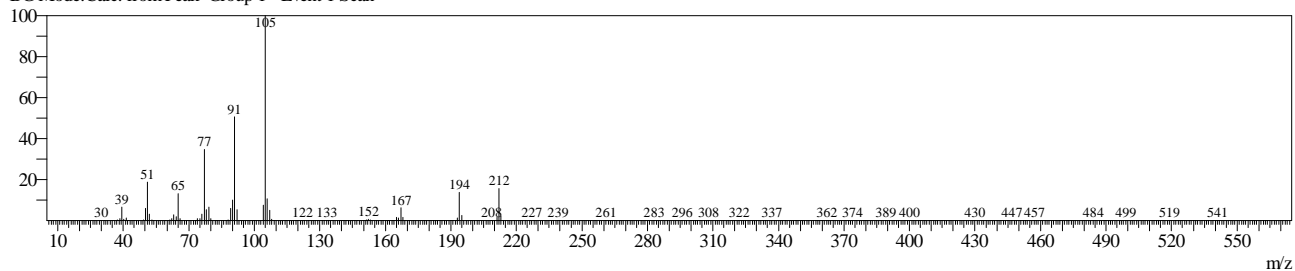
Peak#	R. Time	Area	Area%	Name
1	6.781	4906368	19.22	Benzyl Benzoate
2	10.213	49016	0.19	Caprylic anhydride
3	10.405	46973	0.18	1,2-Dioctanoïn
4	10.514	87408	0.34	1,3-Dioctanoïn
5	13.381	19341118	75.78	Glycerol tricaprilate
6	13.577	42050	0.16	3-(Benzoyloxy)propane-1,2-diyl dioctanoate
7	13.731	61704	0.24	2-(Nonanoyloxy)propane-1,3-diyl dioctanoate
8	14.135	135487	0.53	3-(Octanoyloxy)propane-1,2-diyl bis(decanoate)
9	14.902	56637	0.22	3-(Octanoyloxy)propane-1,2-diyl bis(decanoate)
10	15.811	759187	2.97	Estradiol Cypionate
11	15.881	37035	0.15	Acetic acid, 3,4,6,7,7a,8,9,10,10a,10b,11,12-dodecahydro-7a-methyl-2-oxo-2H-cyclopenta[1,2]phenanthro[4a,4b-b]oxiren-8
		25522983	100.00	

Line#:1 R.Time:6.781(Scan#:5498)

MassPeaks:283

RawMode:Averaged 6.780-6.782(5497-5499) BasePeak:105(714922)

BG Mode:Calc. from Peak Group 1 - Event 1 Scan

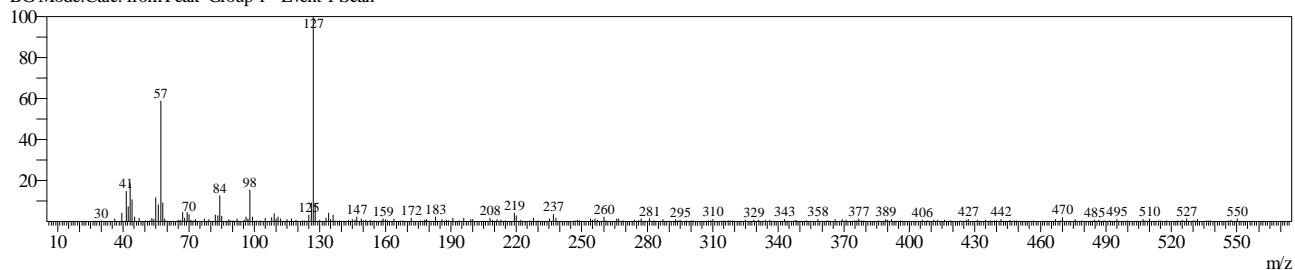


Line#:2 R.Time:10.213(Scan#:9617)

MassPeaks:261

RawMode:Averaged 10.213-10.214(9616-9618) BasePeak:127(10707)

BG Mode:Calc. from Peak Group 1 - Event 1 Scan

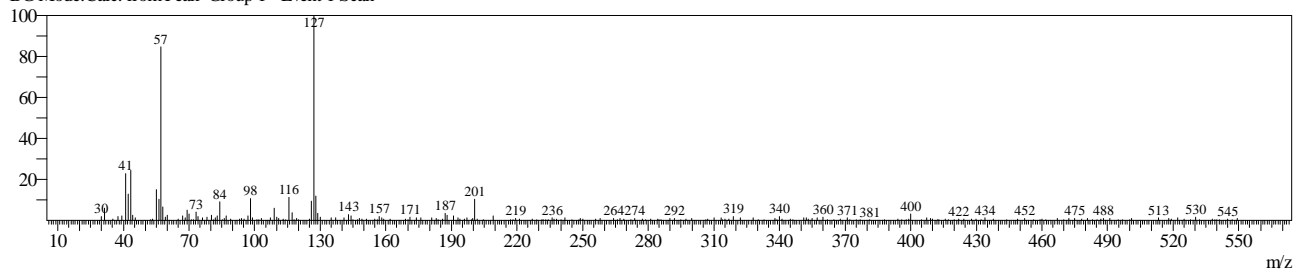


Line#:3 R.Time:10.405(Scan#:9847)

MassPeaks:268

RawMode:Averaged 10.404-10.406(9846-9848) BasePeak:127(9060)

BG Mode:Calc. from Peak Group 1 - Event 1 Scan

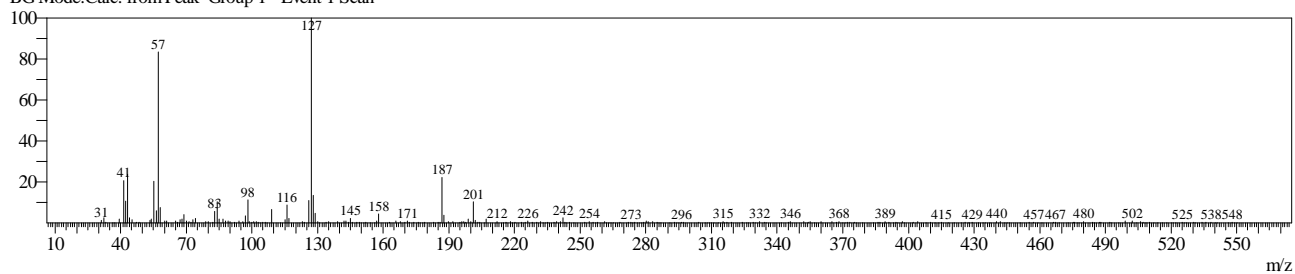


Line#:4 R.Time:10.514(Scan#:9978)

MassPeaks:289

RawMode:Averaged 10.513-10.515(9977-9979) BasePeak:127(17651)

BG Mode:Calc. from Peak Group 1 - Event 1 Scan

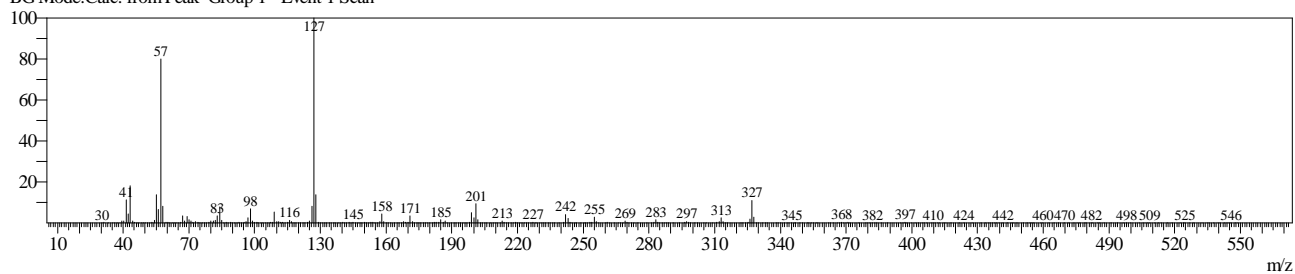


Line#:5 R.Time:13.381(Scan#:13418)

MassPeaks:396

RawMode:Averaged 13.380-13.382(13417-13419) BasePeak:127(2158824)

BG Mode:Calc. from Peak Group 1 - Event 1 Scan

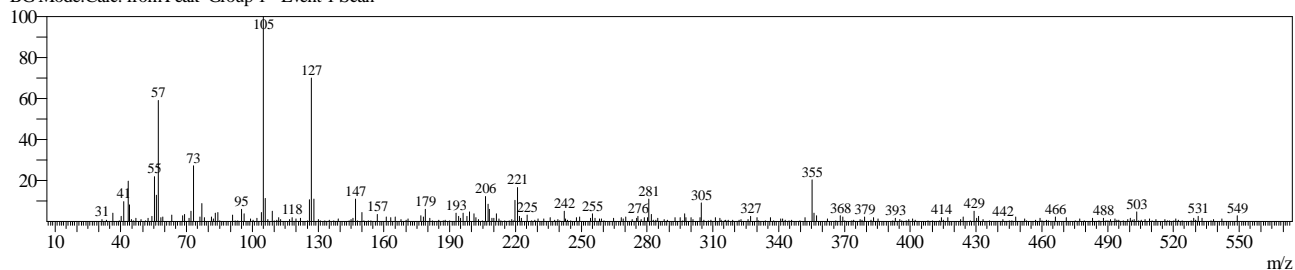


Line#:6 R.Time:13.577(Scan#:13653)

MassPeaks:309

RawMode:Averaged 13.576-13.578(13652-13654) BasePeak:105(5627)

BG Mode:Calc. from Peak Group 1 - Event 1 Scan

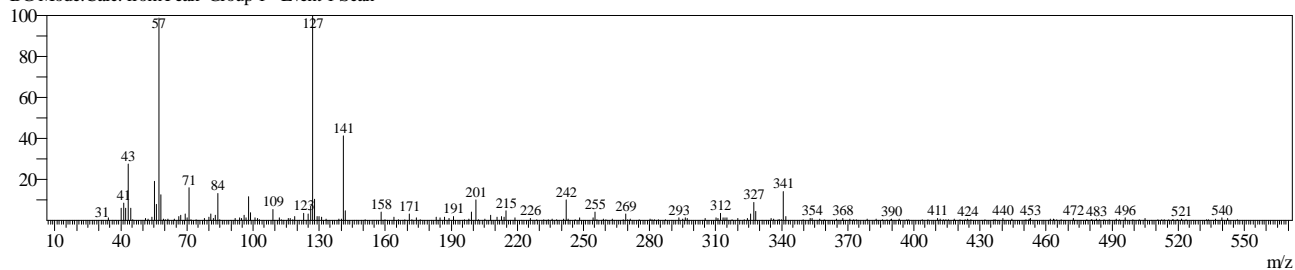


Line#:7 R.Time:13.731(Scan#:13838)

MassPeaks:280

RawMode:Averaged 13.730-13.732(13837-13839) BasePeak:127(10043)

BG Mode:Calc. from Peak Group 1 - Event 1 Scan

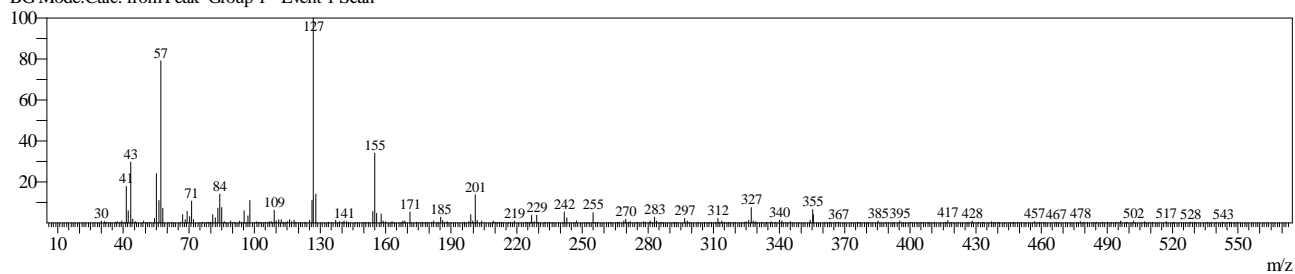


Line#:8 R.Time:14.135(Scan#:14323)

MassPeaks:302

RawMode:Averaged 14.134-14.136(14322-14324) BasePeak:127(20656)

BG Mode:Calc. from Peak Group 1 - Event 1 Scan

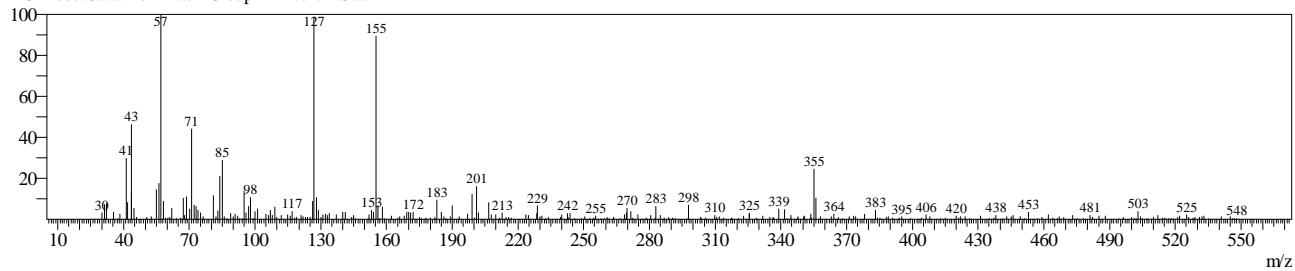


Line#:9 R.Time:14.902(Scan#:15243)

MassPeaks:303

RawMode:Averaged 14.901-14.903(15242-15244) BasePeak:57(4392)

BG Mode:Calc. from Peak Group 1 - Event 1 Scan

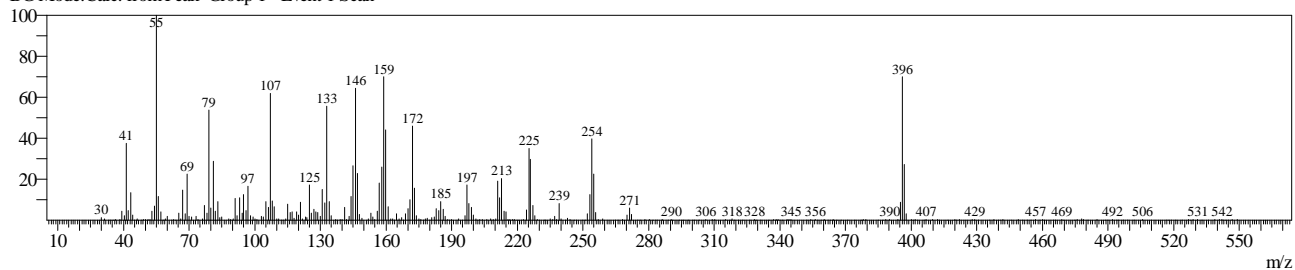


Line#:10 R.Time:15.811(Scan#:16334)

MassPeaks:346

RawMode:Averaged 15.810-15.812(16333-16335) BasePeak:55(36780)

BG Mode:Calc. from Peak Group 1 - Event 1 Scan



Line#:11 R.Time:15.882(Scan#:16419)

MassPeaks:292

RawMode:Averaged 15.881-15.883(16418-16420) BasePeak:252(1391)

BG Mode:Calc. from Peak Group 1 - Event 1 Scan

