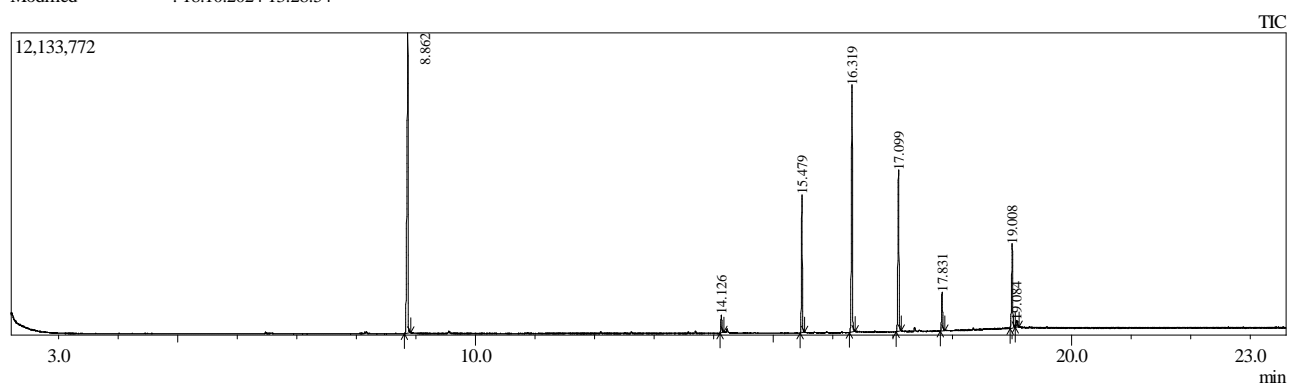


Sample Information

Analyzed by : Admin
 Analyzed : 18.10.2024 13:04:56
 Sample Type : Unknown
 Level # : 1
 Sample Name : 3758-1 Estradiol Undecylate analysis Blue band
 Sample ID :
 IS Amount : [1]=1
 Sample Amount : 1
 Dilution Factor : 1
 Vial # : 26
 Injection Volume : 0.50
 Data File : C:\GCMSsolution\Data\Project1\3758-1 Estradiol Undecylate analysis Blue band_27.qgd
 Org Data File : C:\GCMSsolution\Data\Project1\3758-1 Estradiol Undecylate analysis Blue band_27.qgd
 Method File : C:\GCMSsolution\Data\Project1\the real screening gradient.qgm
 Org Method File : C:\GCMSsolution\Data\Project1\the real screening gradient.qgm
 Report File : C:\GCMSsolution\Data\Project1\Simple Qualitative.qgr
 Tuning File : C:\GCMSsolution\System\Tune1\HIGH CONCENTRATION TUNE.qgt
 Modified by : Admin
 Modified : 18.10.2024 13:28:54



Peak Report TIC

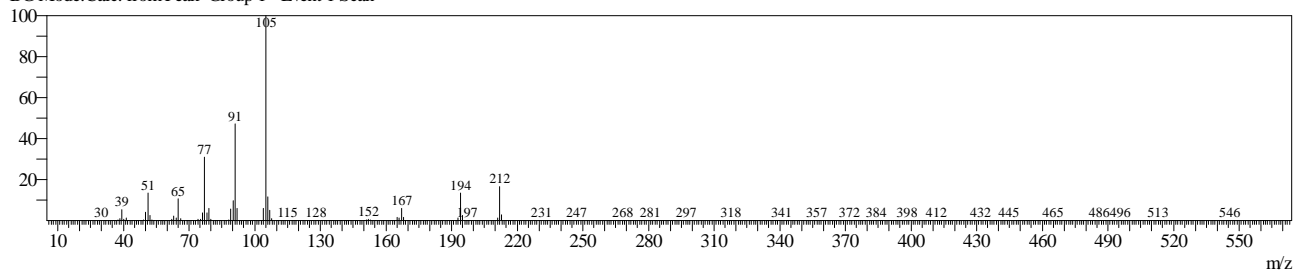
Peak#	R. Time	Area	Area%	Name
1	8.862	15969553	32.79	Benzyl Benzoate
2	14.126	830288	1.70	Estrone
3	15.479	5688583	11.68	Glycerol tricaprylate
4	16.319	11703326	24.03	2-(Decanoyloxy)propane-1,3-diyl dioctanoate
5	17.099	7913297	16.25	3-(Octanoyloxy)propane-1,2-diyl bis(decanoate)
6	17.831	1749236	3.59	Decanoic acid, 1,2,3-propanetriyl ester
7	19.008	4382334	9.00	Estra-1,3,5(10)-triene-3,17-diol (17.beta.)-, 17-propanoate
8	19.084	469757	0.96	Estra-1,3,5(10),9(11)-tetraene-3,17-diol, diacetate, (17.beta.)-
		48706374	100.00	

Line#:1 R.Time:8.863(Scan#:7996)

MassPeaks:326

RawMode:Averaged 8.862-8.863(7995-7997) BasePeak:105(3585931)

BG Mode:Calc. from Peak Group 1 - Event 1 Scan

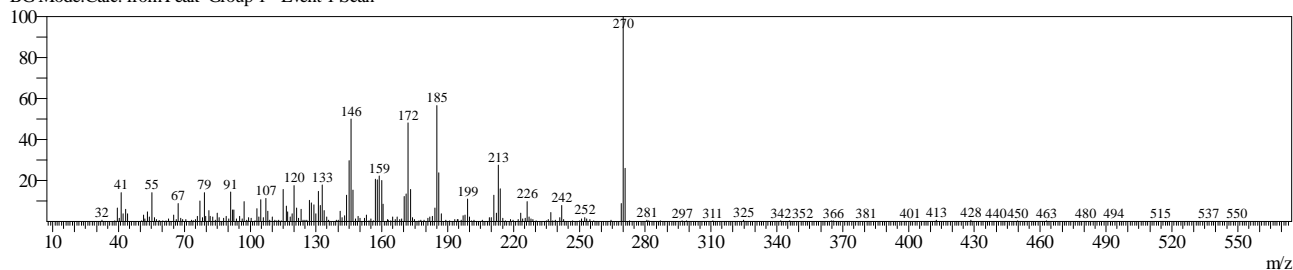


Line#:2 R.Time:14.127(Scan#:14313)

MassPeaks:339

RawMode:Averaged 14.126-14.128(14312-14314) BasePeak:270(64450)

BG Mode:Calc. from Peak Group 1 - Event 1 Scan

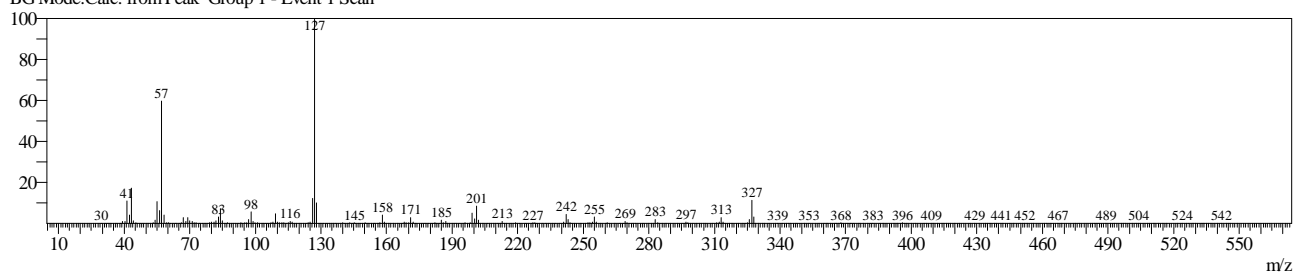


Line#:3 R.Time:15.478(Scan#:15935)

MassPeaks:379

RawMode:Averaged 15.477-15.479(15934-15936) BasePeak:127(1510630)

BG Mode:Calc. from Peak Group 1 - Event 1 Scan

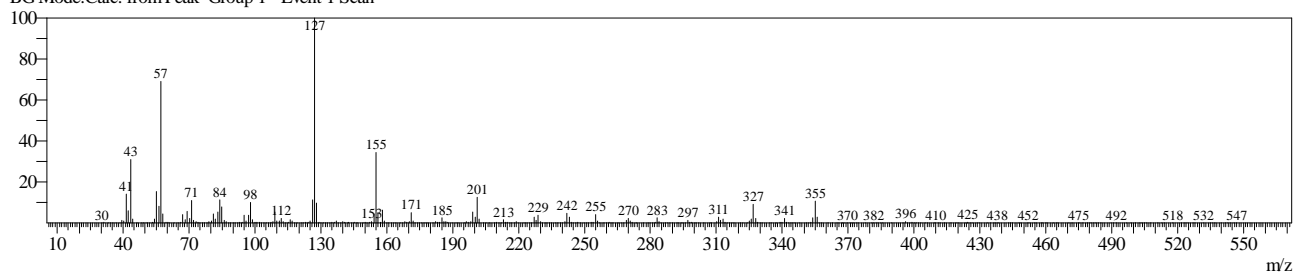


Line#:4 R.Time:16.319(Scan#:16944)

MassPeaks:400

RawMode:Averaged 16.318-16.320(16943-16945) BasePeak:127(1780104)

BG Mode:Calc. from Peak Group 1 - Event 1 Scan

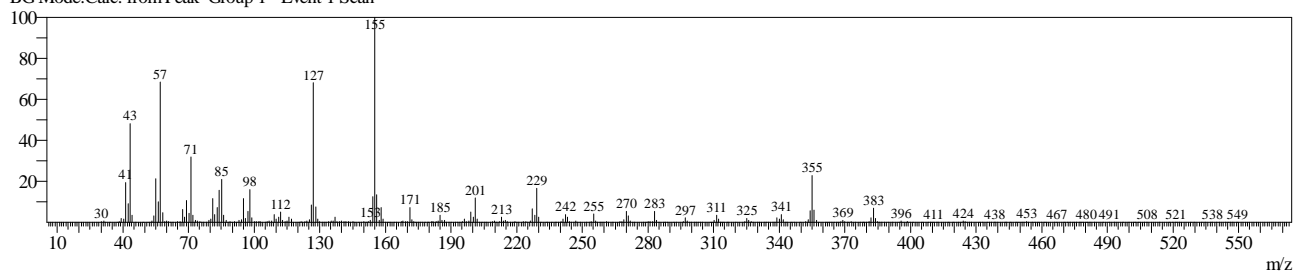


Line#:5 R.Time:17.099(Scan#:17880)

MassPeaks:401

RawMode:Averaged 17.098-17.100(17879-17881) BasePeak:155(800243)

BG Mode:Calc. from Peak Group 1 - Event 1 Scan

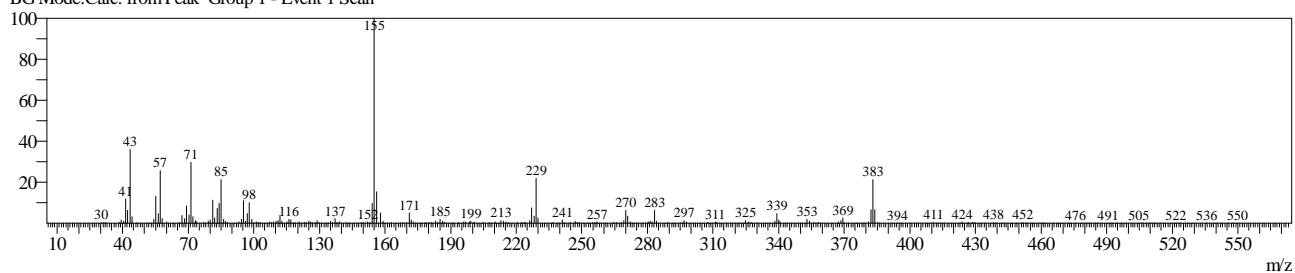


Line#:6 R.Time:17.831(Scan#:18758)

MassPeaks:355

RawMode:Averaged 17.830-17.832(18757-18759) BasePeak:155(277525)

BG Mode:Calc. from Peak Group 1 - Event 1 Scan

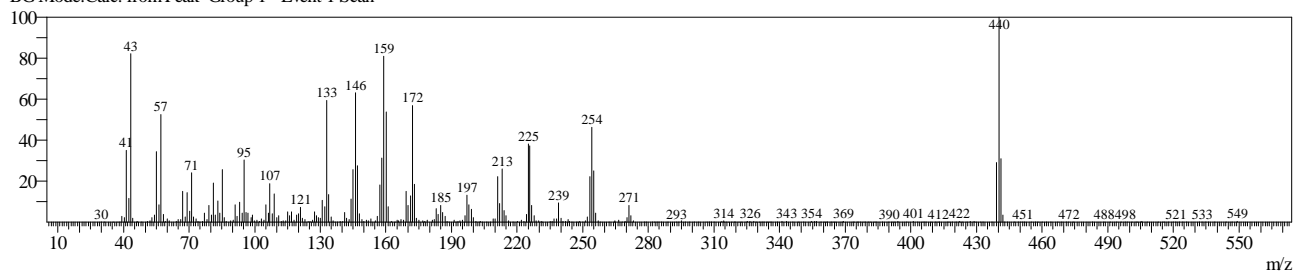


Line#:7 R.Time:19.008(Scan#:20170)

MassPeaks:364

RawMode:Averaged 19.007-19.008(20169-20171) BasePeak:440(200204)

BG Mode:Calc. from Peak Group 1 - Event 1 Scan



Line#:8 R.Time:19.084(Scan#:20262)

MassPeaks:308

RawMode:Averaged 19.083-19.085(20261-20263) BasePeak:252(17971)

BG Mode:Calc. from Peak Group 1 - Event 1 Scan

