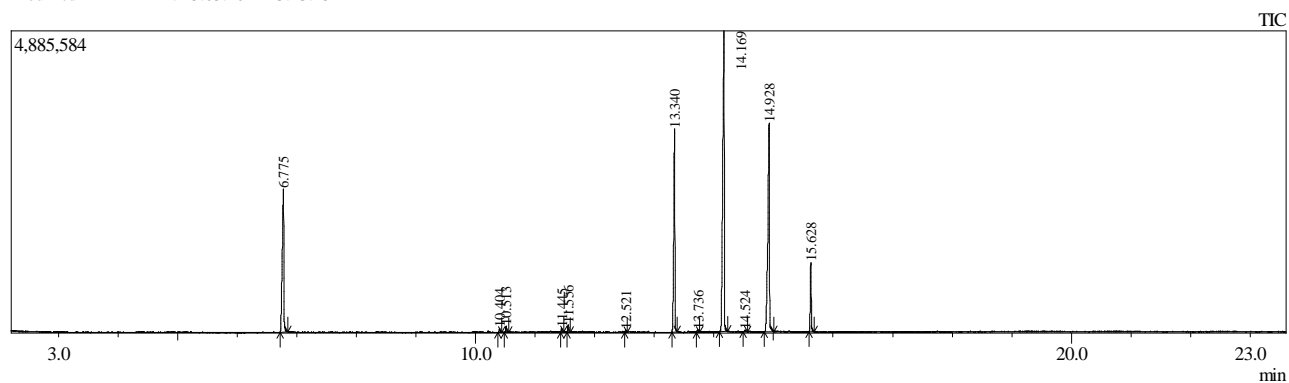


## Sample Information

Analyzed by : Admin  
 Analyzed : 15.05.2024 22:59:34  
 Sample Type : Unknown  
 Level # : 1  
 Sample Name : 1865-5 Blind estradiol screening  
 Sample ID :  
 IS Amount : [1]=1  
 Sample Amount : 1  
 Dilution Factor : 1  
 Vial # : 127  
 Injection Volume : 0.50  
 Data File : C:\GCMSsolution\Data\Project1\1865-5 Blind estradiol screening \_127.qgd  
 Org Data File : C:\GCMSsolution\Data\Project1\1865-5 Blind estradiol screening \_127.qgd  
 Method File : C:\GCMSsolution\Data\Project1\the real screening gradient.qgm  
 Org Method File : C:\GCMSsolution\Data\Project1\the real screening gradient.qgm  
 Report File : C:\GCMSsolution\Data\Project1\Simple Qualitative.qgr  
 Tuning File : C:\GCMSsolution\System\Tune1\HIGH CONCENTRATION TUNE.qgt  
 Modified by : Admin  
 Modified : 15.05.2024 23:23:15



Peak Report TIC

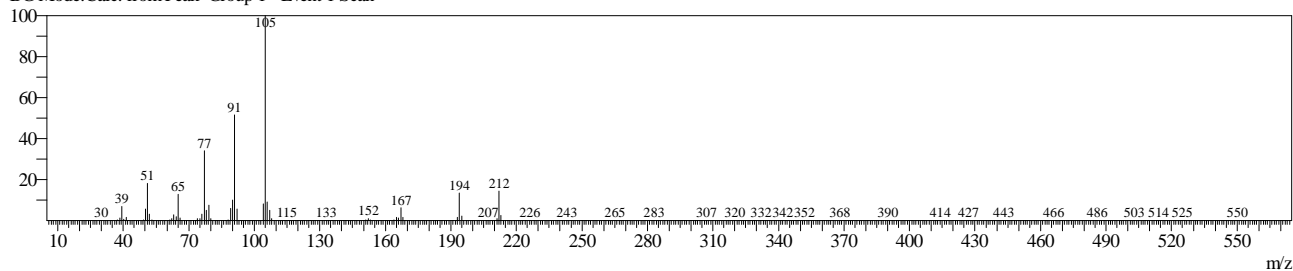
Peak#	R. Time	Area	Area%	Name
1	6.775	4238105	16.89	Benzyl Benzoate
2	10.404	69025	0.28	1,2-Dioctanoïn
3	10.513	111958	0.45	1,3-Dioctanoïn
4	11.445	60243	0.24	1-Hydroxy-3-(octanoyloxy)propan-2-yl decanoate
5	11.556	132653	0.53	1-Hydroxy-3-(octanoyloxy)propan-2-yl decanoate
6	12.521	38473	0.15	1,2-Dicaprin
7	13.340	4308335	17.17	Glycerol tricaprilate
8	13.736	54547	0.22	1-Hydroxy-3-(octanoyloxy)propan-2-yl decanoate
9	14.169	8328005	33.18	2-(Decanoyloxy)propane-1,3-diyl dioctanoate
10	14.524	53035	0.21	1-Hydroxy-3-(octanoyloxy)propan-2-yl decanoate
11	14.928	6444950	25.68	3-(Octanoyloxy)propane-1,2-diyl bis(decanoate)
12	15.628	1259289	5.02	Decanoic acid, 1,2,3-propanetriyl ester
		25098618	100.00	

Line#:1 R.Time:6.775(Scan#:5491)

MassPeaks:282

RawMode:Averaged 6.774-6.776(5490-5492) BasePeak:105(644166)

BG Mode:Calc. from Peak Group 1 - Event 1 Scan

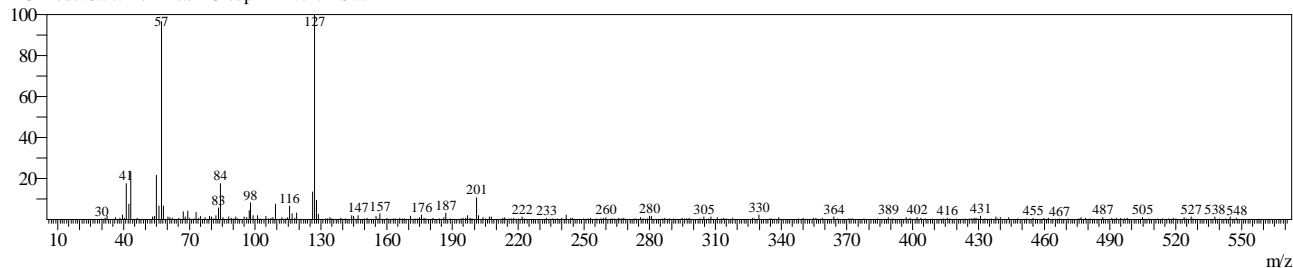


Line#:2 R.Time:10.403(Scan#:9845)

MassPeaks:303

RawMode:Averaged 10.403-10.404(9844-9846) BasePeak:127(11638)

BG Mode:Calc. from Peak Group 1 - Event 1 Scan

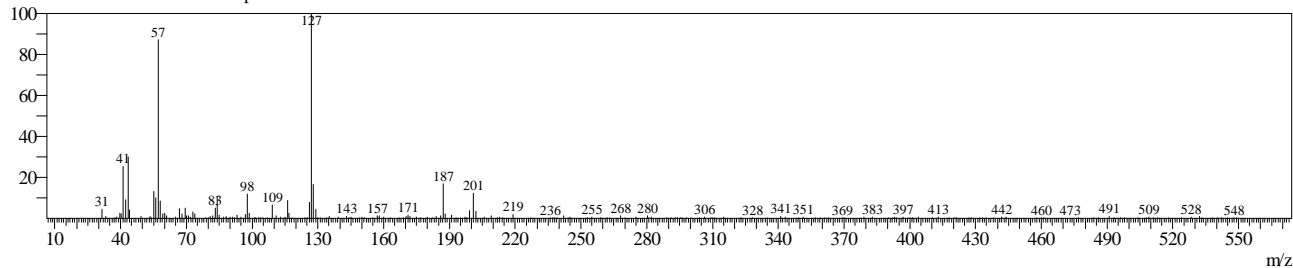


Line#:3 R.Time:10.513(Scan#:9977)

MassPeaks:301

RawMode:Averaged 10.512-10.514(9976-9978) BasePeak:127(19409)

BG Mode:Calc. from Peak Group 1 - Event 1 Scan

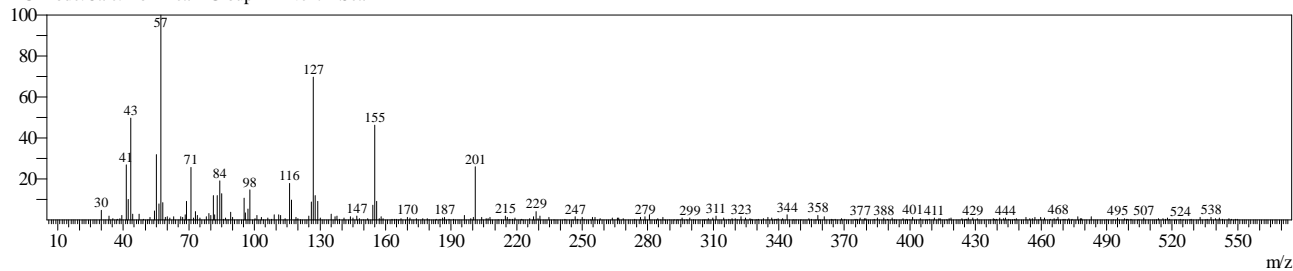


Line#:4 R.Time:11.445(Scan#:11095)

MassPeaks:289

RawMode:Averaged 11.444-11.446(11094-11096) BasePeak:57(8421)

BG Mode:Calc. from Peak Group 1 - Event 1 Scan

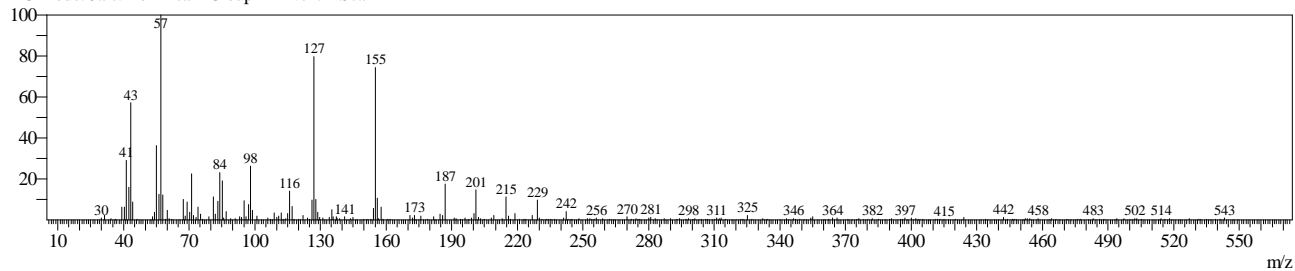


Line#:5 R.Time:11.556(Scan#:11228)

MassPeaks:296

RawMode:Averaged 11.555-11.557(11227-11229) BasePeak:57(14354)

BG Mode:Calc. from Peak Group 1 - Event 1 Scan

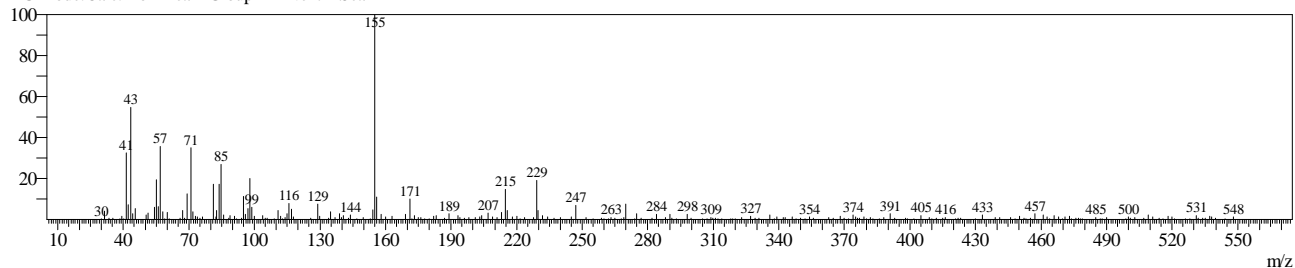


Line#:6 R.Time:12.521(Scan#:12386)

MassPeaks:279

RawMode:Averaged 12.520-12.522(12385-12387) BasePeak:155(5656)

BG Mode:Calc. from Peak Group 1 - Event 1 Scan

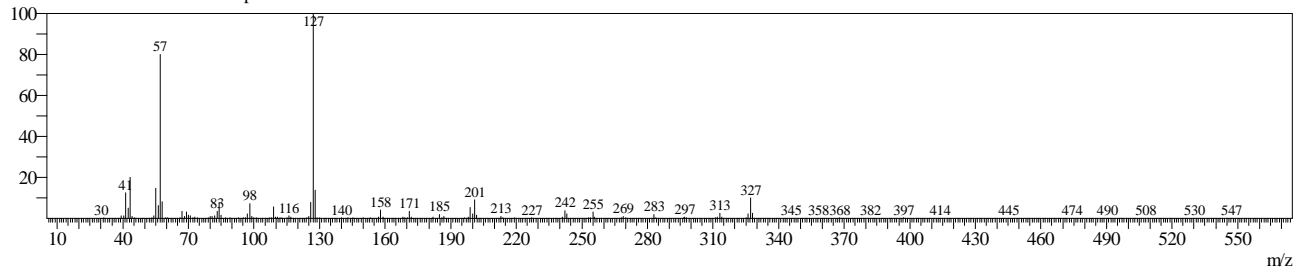


Line#:7 R.Time:13.340(Scan#:13369)

MassPeaks:370

RawMode:Averaged 13.339-13.341(13368-13370) BasePeak:127(801523)

BG Mode:Calc. from Peak Group 1 - Event 1 Scan

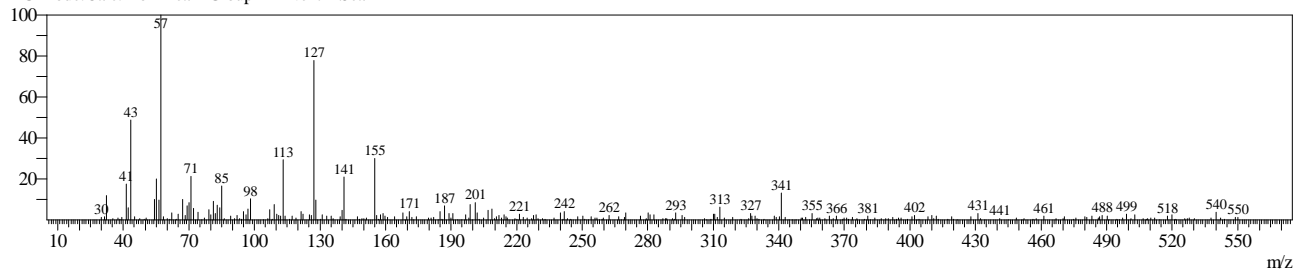


Line#:8 R.Time:13.736(Scan#:13844)

MassPeaks:292

RawMode:Averaged 13.735-13.737(13843-13845) BasePeak:57(4465)

BG Mode:Calc. from Peak Group 1 - Event 1 Scan

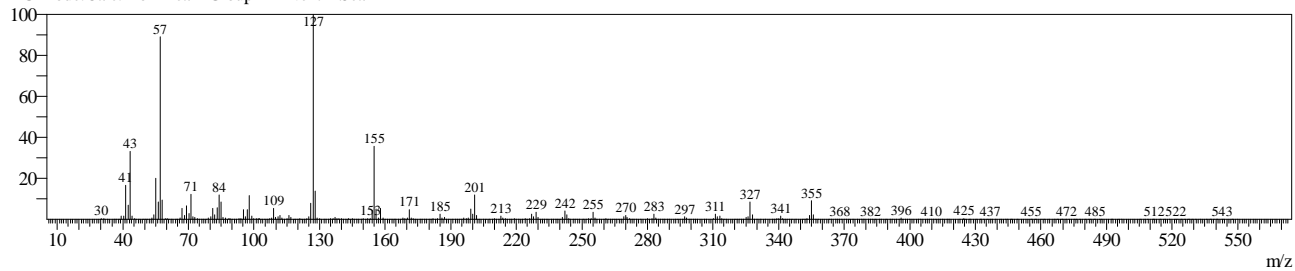


Line#:9 R.Time:14.168(Scan#:14363)

MassPeaks:413

RawMode:Averaged 14.168-14.169(14362-14364) BasePeak:127(815056)

BG Mode:Calc. from Peak Group 1 - Event 1 Scan

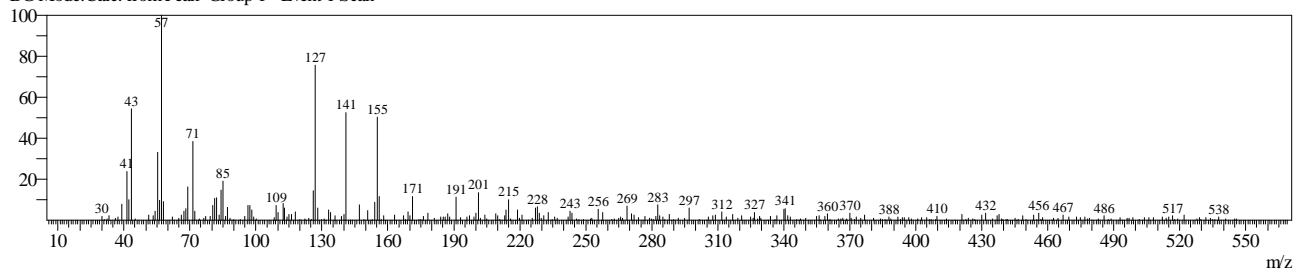


Line#:10 R.Time:14.523(Scan#:14789)

MassPeaks:299

RawMode:Averaged 14.523-14.524(14788-14790) BasePeak:57(3969)

BG Mode:Calc. from Peak Group 1 - Event 1 Scan

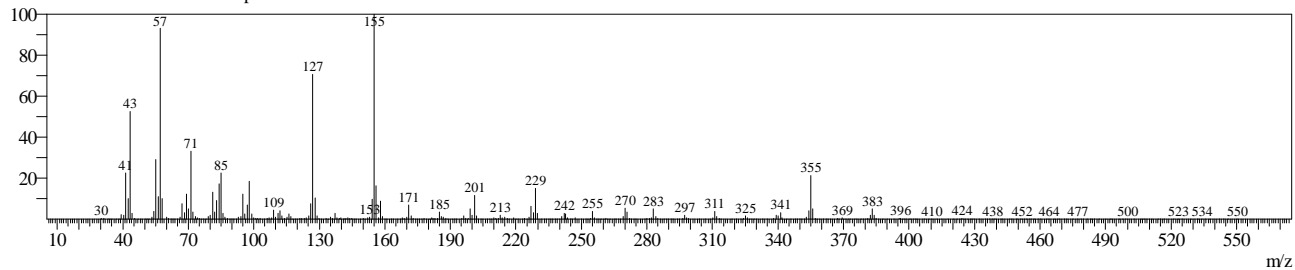


Line#:11 R.Time:14.928(Scan#:15274)

MassPeaks:403

RawMode:Averaged 14.927-14.928(15273-15275) BasePeak:155(389272)

BG Mode:Calc. from Peak Group 1 - Event 1 Scan



Line#:12 R.Time:15.628(Scan#:16115)

MassPeaks:371

RawMode:Averaged 15.628-15.629(16114-16116) BasePeak:155(197672)

BG Mode:Calc. from Peak Group 1 - Event 1 Scan

